

# Cudgee Connections

A guide to enrolling your child into Kindergarten at  
**CUDGEGONG VALLEY PUBLIC SCHOOL**

## Kindergarten 2026



**Cudgegong Valley Public School**

A Madeira Road Mudgee NSW 2850  
T 02 6372 3466 F 02 6372 6314  
E [cudgegongv-p.school@det.nsw.edu.au](mailto:cudgegongv-p.school@det.nsw.edu.au)

# Where the adventure begins...

Dear Parents/Caregivers,

We are delighted that you have indicated an interest in enrolling your child at Cudgegong Valley Public School. We have assembled an information pack containing some useful information to assist you in completing the process of enrolling your child at our school in preparation for commencing Kindergarten in 2026.

## **Cudgee Connections**

This is a guide to enrolling your child into Kindergarten 2026 at Cudgegong Valley Public School which includes an overview of the transition to Kindergarten for students and important dates for 2025.

## **Cudgegong Valley Public School Information Booklet**

Our complete whole school manual for families.

Each Department of Education school across NSW has a local intake area. To identify if you reside within the local intake area for Cudgegong Valley Public School please go to the NSW Public School Finder at <https://my.education.nsw.gov.au/school-finder/index>. All NSW Department of Education schools also have an enrolment ceiling. The enrolment ceiling is the number of students that can be enrolled at a school based on the school's permanent accommodation. The enrolment ceiling tells us whether the school may or may not have the capacity to accept non-local enrolments. Our school's current enrolment exceeds our enrolment ceiling. For this reason, our school is unable to take non-local students, unless there are exceptional circumstances. More information regarding this can be found in our school Enrolment Policy on the school website <https://cudgegongv-p.schools.nsw.gov.au/about-our-school/rules-and-policies>.

The enrolment process should be completed by the Friday 27th June 2025. Enrolments are lodged online via the school website or the following link: <https://cudgegongv-p.schools.nsw.gov.au/about-our-school/enrolment>.

To complete your child's enrolment please provide the following documents to the school office by Friday, 27th June 2025:

- Birth Certificate
- Immunisation History Statement (from the My Gov website)
- Documents to complete the 100 Point Residential Address Check (Refer to page 5)

If you are unable to complete the enrolment online, please contact Lisa Hauville at the school office for a paper enrolment form. If you are applying for an out-of-area (non-local school) enrolment then this application needs to be submitted by 20th June 2025. Please refer to the next page for further information regarding this process.

Once enrolled at Cudgegong Valley Public School, our transition to school process begins. This involves a Parent Information Meeting on Wednesday, 6th August. At this meeting, you will receive further information about starting Kindergarten at Cudgegong Valley Public School, our transition to school program and how to book your child's transition to Kindergarten sessions.

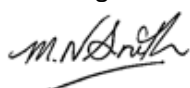
Later in Term 3, children enrolling in Kindergarten for 2026 who are not yet familiar with our school environment will be invited to attend short transition sessions. These sessions give our new little learners, the opportunity to become more comfortable and confident in their new school setting. More information in regard to these sessions will be available closer to the date.

Our 'Let's Connect' Transition to school Program will commence in Term 4, when the children will visit the school for 5x1 hour visits.

Upon conclusion of the Transition program, your child will receive a special invitation to spend an afternoon with their 2026 Kindergarten teacher and new classmates to be held in the last week of the school year.

Your child is embarking on a journey that will lead them on many roads of discovery and learning and we feel privileged to be a part of this experience.

Kind regards,



Michelle Neaverson-Smith  
Principal



Tamara Hargraves  
Deputy Principal

# Non Local Primary School Enrolment Policy & Guidelines

Each Department of Education school across NSW has a local intake area. To identify if you reside within the local intake area for Cudgegong Valley Public School please go to the NSW Public School Finder at <https://my.education.nsw.gov.au/school-finder/index>. All NSW Department of Education schools also have an enrolment ceiling. The enrolment ceiling is the number of students that can be enrolled at a school based on the school's permanent accommodation. The enrolment ceiling tells us whether the school may or may not have the capacity to accept non-local enrolments. Within the enrolment ceiling, a number of enrolment places (the buffer) must be kept aside for the likely number of local students who will need to enrol during the year. Our school's current enrolment exceeds our enrolment ceiling. For this reason, our school is unable to take non-local students, unless there are exceptional circumstances.

Applications for non-local school enrolments are considered on a case-by-case basis and must be supported by relevant documentation. **All non-local enrolment applications for 2026 must be submitted to the school no later than Friday 20th June 2025.** All non-local school enrolment applications are provided to the School Enrolment Panel (in line with Department of Education Policy) which consists of the Deputy Principal, P&C President (or representative) and a staff member who assess the application on the basis of the criteria outlined below. The panel is chaired by the Deputy Principal, who will have the casting vote. The panel will be meeting in the first week of Term 3, 2025. Decisions regarding the outcome of non-local school enrolment applications will be communicated prior to the second parent information meeting scheduled on Wednesday 6th August 2025.

Where a parent wishes to appeal the decision of the School Enrolment Panel, the appeal should be made in writing to the Principal who will consider the application and make a determination on whether the stated criteria has been applied fairly. The final decision to enrol a particular student at a non-local school is the responsibility of the site Principal.

Exceptional circumstances criteria for Non-Local Enrolment Applications: The following are the criteria that may be considered by the Enrolment Panel:

- Safety and supervision considerations of students before and after school that are outside the capacity of the local school and that can be supported by relevant documentation.
- Specific student welfare needs that can be supported with appropriate supporting documentation.
- Compassionate reasons outlined by parents/carers.
- Change in residence to purchased/leased or rental accommodation (with supporting documentation).
- Specific medical needs that can only be met at the non-local location and can be supported with relevant documentation.
- Sibling already enrolled at the school.

If you have any questions regarding this process please don't hesitate to contact us on 6372 3466.



# 2025 Important Dates

## School Expo for Kindergarten 2026

7th May - 5:30pm to 6:30pm in our school hall

## School Tours and Open Classrooms

Meet at the school office at 10am on one of the following dates:

20th & 23rd May

3rd & 6th June

**Enrolments to be finalised** - Friday 27th June

## Parent Information Evening

6th August - 5:30pm to 6:15pm in our school hall

## Transition to Kindergarten Program

Later in Term 3, children enrolling in Kindergarten for 2026 who are not yet familiar with our school environment will be invited to attend short transition sessions. These sessions give our new little learners, the opportunity to become more comfortable and confident in their new school setting. More information in regard to these sessions will be available closer to the date.

All Kindergarten 2026 students will participate in our official transition to school program, **'Let's Connect'** which is run by our Kindergarten team and is an excellent opportunity for us to get to know your child and for your child to get to know our school and staff. These session will be held in Term 4.

## 'Let's Connect' sessions

***5 x 1 hour Transition to school program sessions over 5 weeks to support children's readiness for school.***

Session 1: 21st or 24th October

Session 2: 28th or 31st October

Session 3: 4th or 7th November

Session 4: 11th or 14th November

Session 5: 18th or 21st November

## Meet your Teacher and Class afternoon

16<sup>th</sup> December 2:15pm to 3pm

Links to register for the School Tours and transition to school sessions will be emailed to our Kindergarten group during the year. If you are unable to book via the links please phone Lisa at the school office to make a booking.





# YOUR COMPLETE GUIDE

## *to the enrolment process*

Please complete your child's enrolment online via the following link:  
<https://cudgegongv-p.schools.nsw.gov.au/about-our-school/enrolment>

Scroll down to **How to Enrol** and click on **online enrolment**.

If you are unable to complete your child's enrolment online, please contact the school office for a paper enrolment form.

## CHECKLIST

- ☐ **Residential address check**  
(100-point residential address check as per the table on the next page)
- ☐ **Birth Certificate**
- ☐ **AIR Immunisation History Statement**  
via myGov at <https://my.gov.au/>  
or phone 132 307
- ☐ **General Permission /SRE note** (enclosed)
- ☐ **Consent to Use Third-Party Online Services**  
(enclosed)

Also consider...

- ☐ **My child has health, disability or other support needs**

If YES please include:

- Copies of medical/healthcare or emergency action plans.
- Evidence of any disability or other support needs, including any learning and support plans.

Once you have completed your child's enrolment online please bring the supporting documents as per our checklist to the school office.

**Remember, enrolments are due by Friday, 27th June.**

If you have any queries, our helpful office staff are here to assist. Please don't hesitate to call into the school office or phone us on 6372 3466.

# Residential Address Check

## For the enrolment of students in NSW Government schools

### Key principles

The Education Act 1990 provides the key principles that govern the enrolment of students in NSW Government schools. Some of them are summarised below.

The parent of a child may enrol the child at any government school if the child is eligible to attend the school and the school can accommodate the child (section 34.1).

A child is entitled to be enrolled at the government school that is designated for the intake area within which the child's home is situated and that the child is eligible to attend (section 34.2).

The principal may, for the purpose of establishing a child's eligibility to attend or entitlement to be enrolled at the school, require a person seeking to enrol the child at the school to provide proof, to the satisfaction of the principal, of the child's identity, date of birth and home address (section 34A.1).

In determining whether a child could be accommodated, the number of classrooms and other facilities may be considered (section 34.6).

The enrolment of a child who is not entitled to be enrolled at the school may be terminated if the child was enrolled as a result of false information or a false document provided (section 34A.4).

### Establishing the child's residential address

To determine a child's eligibility to attend or entitlement to enrol in the school, the principal may require documents to establish the child's address.

Generally, acceptable documents show the full name of the parent and address of the parent or carer with whom the child lives. However, any requests for proof of address must be reasonable in the circumstances.

Staff in schools abide by the Privacy and Personal Information Protection Act 1998 (NSW). Residential address information provided will be used to process applications for enrolment and associated purposes and the information will be stored securely.

### 100-point residential address check in some schools with a designated intake area

Schools that are above or near (i.e. the number of non-local enrolment applications received exceeds the number of enrolment places available outside the local enrolment buffer) their buffer level use the following 100-point residential address check to verify that the student being presented for enrolment lives within the intake area.

## 100 Point Residential Address Check List

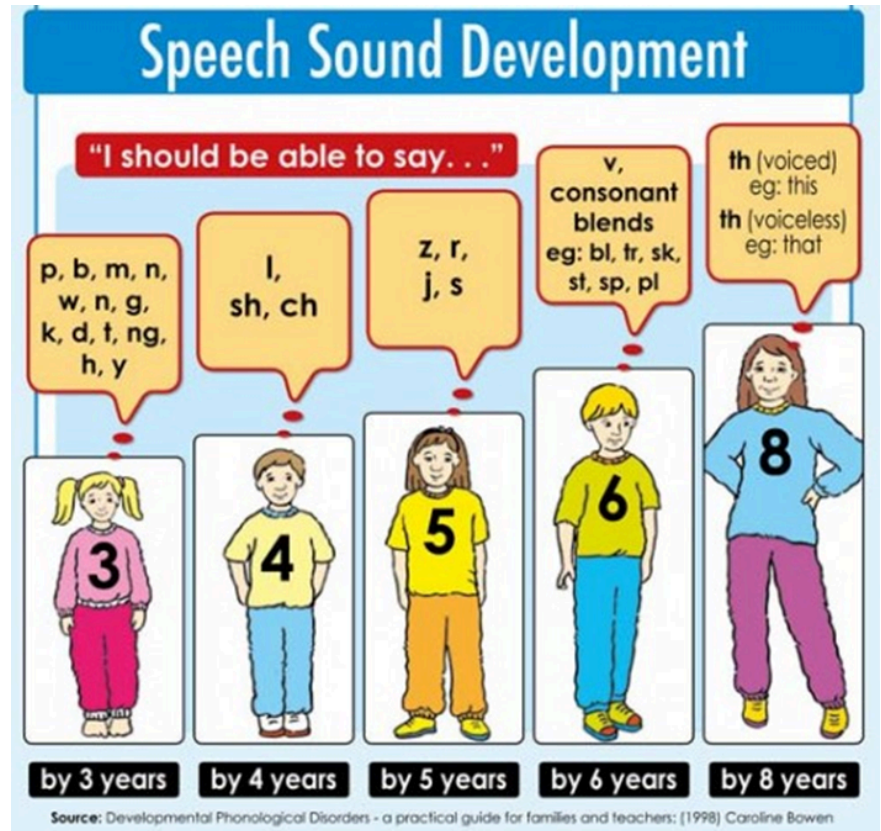
Document showing the full name of the child's parent	Points
<b><u>Only one of (i.e. no additional points for additional documents)</u></b>	
Council Rates	40
Lease agreement through a registered real estate agent for a period of at least 6 months or rental board bond receipt	40
Exchanged contract of sale with settlement to occur within the applicable school year	40
<b>Any of the following</b>	
Private rental agreement for a period of at least 6 months	20
Centrelink payment statement showing home address	20
Electoral roll statement	20
Electricity or gas bill showing the service address*	15
Water bill showing the service address*	15
Telephone or internet bill showing the service address*	15
Drivers licence or government issued ID showing home address*	15
Home building or home contents insurance showing the service address	15
Motor vehicle registration or compulsory third party insurance policy showing home address	15
Statutory declaration stating the child's residential address, how long they have lived there, and any supporting information or documentation of this.	20
<b>Total Points (*up to 3 months old)</b>	

# School Readiness CHECKLIST

Your child can start Kindergarten at the beginning of the school year if they **turn five on or before 31 July** in that year. By law, all children must be enrolled in school by their sixth birthday.

If you're not sure about whether your child is ready to start school please contact our office to discuss this with one of our staff. Alternatively, have a conversation with their pre-school teacher.

- Each child is different, and thus their readiness for school is varied.
- The following checklists are a guide to assist you in understanding where your child is at and what we look for as educators.
- Not every box may be ticked, and that's OK. Every child develops at a different rate!



## How do schools get ready for your child?

Early Learning Centres provide copies of the **NSW Transition to School Statement** to your child's school. This, coupled with the enrolment information you provide, other relevant documentation/assessments and your child's participation in our transition program, Let's Connect, ensures we are ready for your child and their individual learning needs.

## NSW Transition to School Statement

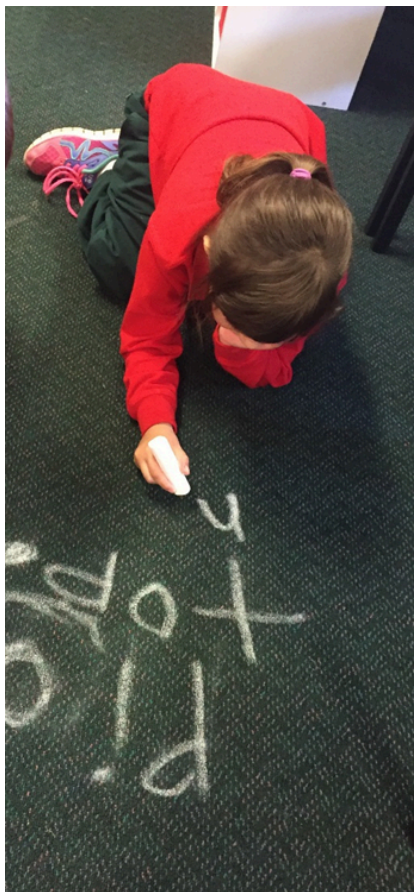
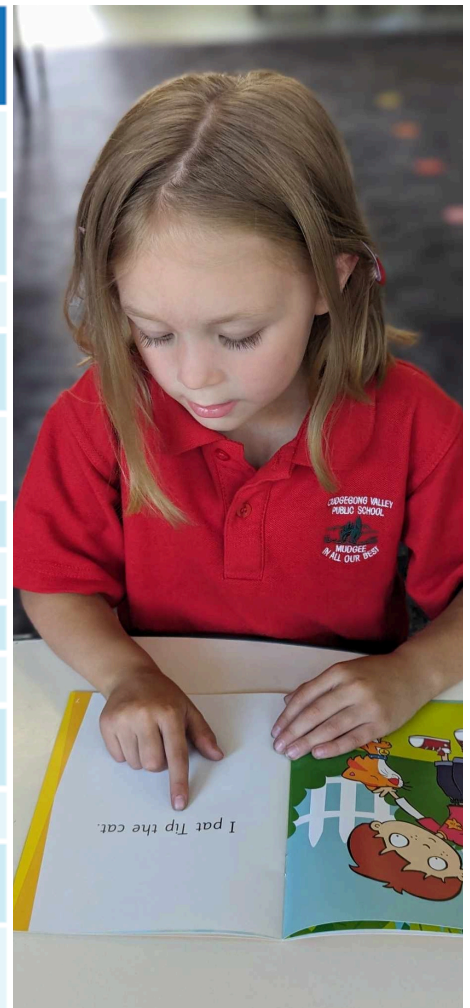
Starting school is a significant event in the life of children and their families.

We know that strong relationships and information sharing between families, early childhood services and schools help support a child's successful transition to school.

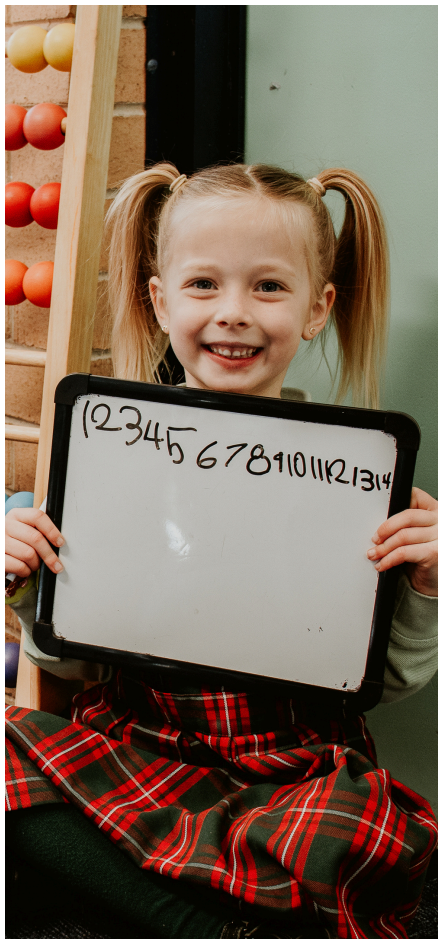
Evidence suggests that children who have a positive start to school are likely to engage well and to experience ongoing academic and social success.



Social Skills CAN YOUR CHILD .....?	Always does this very well	Can do this sometimes	Usually needs assistance
Face a person when they are talking and give "eye contact"			
Comply with requests, cease activity when requested			
Manage frustration and avoid tantrums			
Wait patiently for several minutes for adult attention			
Sit at a table and work for 10 minutes (with assistance)			
Separate from parents			
Independently begin an activity			
Ask for and accept help if necessary			
Play at an activity for 20 minutes or more			
Play co-operatively with friends for 20 minutes or more			
Share own toys with friends			
Take turns in a small group game without assistance			
Understand the needs and feelings of others			



Independence Skills CAN YOUR CHILD .....?	Can do this very well	Can do this sometimes	No, needs Assistance
Put on/remove socks, shoes, jacket			
Do up buckles/velcro (not laces) on shoes/sandals			
Do up large buttons			
Go to the toilet independently			
Wash and dry hands independently			
Blow nose and wipe efficiently			
Unwrap and eat lunch, peel fruit, manage lunchbox			
Use a spoon and fork independently			
Unscrew a drink bottle			
Recognise belongings amongst others eg raincoat			
Take care of own belongings eg put bag in a designated place			
Tidy up own things, pack away			



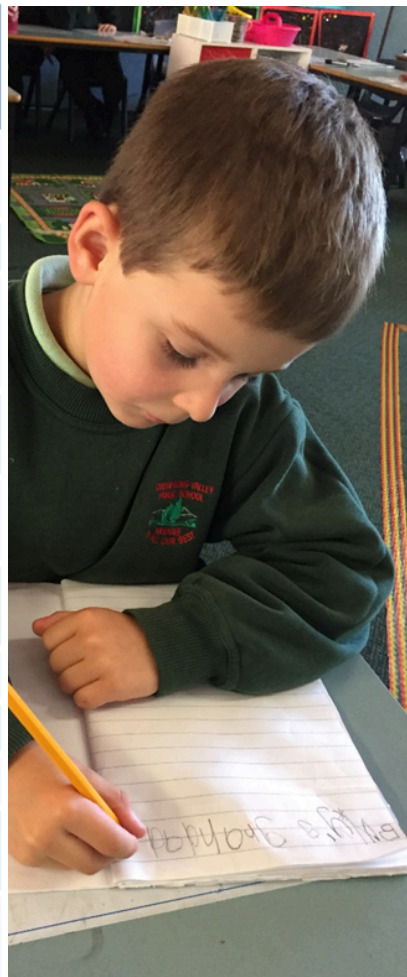
Communication CAN YOUR CHILD .....?	Can do this very well	Can do this sometimes	No, needs Assistance
Initiate and sustain conversations with adults and other children			
Speak clearly and audibly and maintain eye contact			
Speak without shouting or whispering			
Answer inferential questions, eg why? what's next ?			
Describe recent experiences			
Recite rhymes and sing songs			
Retell stories			
Understand requests and seek clarification			
Carry out three directions in sequence			
Listen attentively and answer questions in a group situation			
Talk reciprocally with peers and take part in conversation			
Interrupt conversations appropriately			

Fine Motor & Cognitive Skills CAN YOUR CHILD .....?	Can do this very well	Can do this sometimes	No, needs Assistance
Recognise own first name			
Isolate fingers (eg to point)			
Understand reading conventions (eg tracking Left to Right across a page)			
State full name, address, age			
Hold a pencil in an appropriate grip			
Draw recognisable pictures of people			
Copy simple shapes: circle, triangle, square			
Cut along a 10cm line with scissors, cut simple shapes			
Complete interlocking puzzles of 8-10 pieces			
Name primary and secondary colours			
Name 6 geometric shapes			
Sort and classify objects (eg by colour, function, size etc)			





Gross Motor & Orientation Skills CAN YOUR CHILD .....?	Can do this very well	Can do this sometimes	No, needs Assistance
Move about confidently at preschool			
Manage unfamiliar environments			
Manage changes in the environment independently eg stairs, obstacles, uneven ground			
Understand spatial concepts eg up/down, next to, left/right			
Move with a line of children at routine times			
Use a wide range of gross motor equipment			
Play imaginatively (indoors and outdoors)			
Catch and throw a ball with a partner			
Kick a ball			
Play actively with friends outside for 50-60 minutes			
Understand the need for safety eg roads, heights			



Attempt to solve problems independently			
Describe concepts eg. big/small, more/less, same/different, in front/behind, under/over, actions etc			
Count objects with 10 or more in the group			
Concentrate on a story being told in a group setting, despite distractions			
Enjoy interactive reading and answer questions about stories in a 1:1 setting			
Attempt to solve problems independently			



## Cudgegong Valley Public School

A Madeira Road Mudgee NSW 2850

T 02 6372 3466 F 02 6372 6314

E [cudgegongv-p.school@det.nsw.edu.au](mailto:cudgegongv-p.school@det.nsw.edu.au)



## TRANSITION TO SCHOOL IN THE MID-WESTERN REGION INFORMATION PAMPHLETS FOR PARENTS AND CARERS

### 1. Early Childhood Education and Care

3. Schools / Frequently Asked Questions

2. School Readiness

4. Support for children with Additional Needs

It is recommended by the Australian Government that each child receive at least 15 hours of preschool education per week, delivered by a university qualified teacher, in the year before school. This can be delivered in a range of settings including Preschool and Long Day Care.

There may be waiting lists so it is important to register your child early.

## Early childhood education and care services in the MUDGEE REGION

### MUDGEE

Gowrie NSW Mudgee  
6370 9700  
[mudgee@gowriensw.com.au](mailto:mudgee@gowriensw.com.au)  
[www.gowriensw.com.au](http://www.gowriensw.com.au)

Kiddie Academy  
6372 7220  
[mudgee@kiddieacademy.nsw.edu.au](mailto:mudgee@kiddieacademy.nsw.edu.au)  
[www.kiddieacademy.nsw.edu.au](http://www.kiddieacademy.nsw.edu.au)

Mudgee Little Learners  
6372 0782  
[director@mudgeelittlelearners.com.au](mailto:director@mudgeelittlelearners.com.au)  
[www.mudgeelittlelearners.com.au](http://www.mudgeelittlelearners.com.au)

Milestones Early Learning  
6372 2040  
[mudgee@milestones.com.au](mailto:mudgee@milestones.com.au)  
[milestones.com.au/nsw/mudgee/](http://milestones.com.au/nsw/mudgee/)

Mudgee Community Preschool  
Lovejoy St and South Mudgee Campuses  
6372 1460  
[enquiries@mudgeepreschool.com.au](mailto:enquiries@mudgeepreschool.com.au)  
[www.mudgeecommunitypreschool.com.au/](http://www.mudgeecommunitypreschool.com.au/)

Puggles  
6372 1204  
[admin@puggleschildcare.com.au](mailto:admin@puggleschildcare.com.au)  
[www.puggleschildcare.com.au/](http://www.puggleschildcare.com.au/)

Squeakers  
6372 2620  
[admin@squeakers.com.au](mailto:admin@squeakers.com.au)  
[squeakers.com.au/](http://squeakers.com.au/)

### GULGONG

Gulgong Preschool  
6374 1475  
[director@gulgongpreschool.com.au](mailto:director@gulgongpreschool.com.au)  
[www.gulgongpreschool.com.au](http://www.gulgongpreschool.com.au)

Happy Days  
6374 2288  
[happydays@happydaysgulgong.onmicrosoft.com](mailto:happydays@happydaysgulgong.onmicrosoft.com)  
[happydaysgulgong.com.au](http://happydaysgulgong.com.au)

### RYLSTONE / KANDOS

Rylstone/Kandos Preschool  
6379 4273  
[admin@rkpreschool.com.au](mailto:admin@rkpreschool.com.au)  
[www.rkpreschool.com.au](http://www.rkpreschool.com.au)

### FAMILY DAY CARE IN LOCAL GOVERNMENT AREA

6378 2730  
[family.daycare@midwestern.nsw.gov.au](mailto:family.daycare@midwestern.nsw.gov.au)  
[www.midwestern.nsw.gov.au/Community/Community-Services/Family-Day-Care](http://www.midwestern.nsw.gov.au/Community/Community-Services/Family-Day-Care)

### SMALL SCHOOLS

Some small schools also offer a preschool / playgroup program – see Pamphlet 3 for contact details.

## Key questions to ask when choosing an early childhood service:

- What hours do you operate and do you close throughout holiday seasons?
- Will I be able to visit my child or call them at any time?
- What are your fees and will I be charged fees for public holidays or when my child is not there?
- Can I change the days of care and how much notice is required?
- Do you provide things like nappies and meals or should I bring them from home?
- What is the ratio of staff to children?
- What qualifications, skills and experience do the staff have?
- What ages do you care for?
- What is the process if my child is unwell, upset, unsettled or has an accident?
- What are your policies and procedures around sleep and rest, hygiene, medication and sun protection?
- Has the service been quality rated, and if so, what is the service's rating?
- What support can you offer to my child with additional needs?
- How can families be involved in the service?
- What do I do or who do I speak to if I have any concerns?
- How do you support my child's learning and development and how will you communicate this to me?
- How do you support my child's wellbeing and social/emotional development?
- My child has an allergy/medical condition – how will this be supported and managed?

From: [www.startingblocks.gov.au](http://www.startingblocks.gov.au)

## CHILD CARE FEE ASSISTANCE

The Australian Government provides assistance to eligible families to reduce the costs of early education and care. Different services are funded differently with varying subsidies and benefits. For more information enquire directly at the service or visit:

### CHILD CARE/FAMILY DAY CARE

<https://www.startingblocks.gov.au>  
<https://www.servicesaustralia.gov.au>

### NSW PRESCHOOL

<https://education.nsw.gov.au/early-childhood-education>

## Other community services for young children

### PLAYGROUPS

There are community playgroups catering to a range of children from babies to school age. Some small schools also offer playgroup sessions:

Barnardos Mudgee (Kandos/Rylstone, Mudgee, Gulgong)  
119 Church Street, Mudgee  
PH: 5319 8100

Gulgong Public School Playgroup  
Belmore Street, Gulgong  
PH: 6374 1622

Mudgee Playgroup  
Cnr Atkinson / Madeira Roads, Mudgee  
PH: 1800171882

### MID-WESTERN REGIONAL COUNCIL LIBRARIES

Libraries offer BookWorms (reading and craft) sessions for 3-5 year olds:

Gulgong Library  
PH: 6374 1202

Kandos/Rylstone Library  
PH: 6379 4465

Mudgee Library  
PH: 6378 2740



These pamphlets are an initiative of  
Mudgee Region Child and Family Network  
Pamphlet 1/4: Version 4, July 2024

E: [enquiries@mudgeepreschool.com.au](mailto:enquiries@mudgeepreschool.com.au)  
PH: 6372 1460

ABN 25 686 096 090



## TRANSITION TO SCHOOL IN THE MID-WESTERN REGION INFORMATION PAMPHLETS FOR PARENTS AND CARERS

1. Early Childhood Education and Care
2. **School Readiness**
3. Schools / Frequently Asked Questions
4. Support for children with Additional Needs

The education system sets an age when your child should start school; this varies slightly between systems and states across Australia. In NSW your child can start Kindergarten at the beginning of the school year if they turn five on or before **31 July** in that year. By law, all children must be enrolled in school by their sixth birthday.

Kindergarten enrolment begins around March the year before your child will start. Age is usually the first consideration for parents when making a decision about when their child will start school. You may have some concerns about whether your child is ready to start school even if they are the "right" age. There is an eleven-month difference between the youngest eligible child and the child that just misses the cut off date.

There is considerable international research showing that children who start school when they are older tend to do better.

### To make a decision about **SCHOOL READINESS** you may want to consider:

**Language skills:** communication is used to engage with and teach your child. A child needs to be able to follow instructions and understand what teachers are saying, as well as being able to communicate well with teachers and the other students.

**Physical well-being:** a child who has a disability or a chronic illness may have difficulty with some aspects of school. This does not automatically mean they are not ready for school but any physical or functional limitations need to be considered.

**Motor co-ordination and skills:** a child needs co-ordination skills to allow them to dress and undress, unwrap lunch, use a pencil and scissors, and participate in other activities that require eye hand and motor co-ordination.

**Concentration and emotional adjustment:** a child needs to be able to socialise and play with their classmates. They also need to be able to deal with the structured nature of a more formal learning environment, such as being able to focus on tasks, follow directions and instructions from teachers, cope with transitions, and understand the rules.

**Independence:** a child needs a range of skills so that they can cope with minimum adult supervision. This includes going to the toilet by themselves, dressing, and being able to follow a structured classroom routine.

### USEFUL LINKS

- [www.raisingchildren.net.au/articles/starting\\_school.html](http://www.raisingchildren.net.au/articles/starting_school.html)
- [www.transitiontoschoolresource.org.au/](http://www.transitiontoschoolresource.org.au/)
- [educationstandards.nsw.edu.au/wps/portal/nesa/parents/parent-guide/transitioning-to-school](http://educationstandards.nsw.edu.au/wps/portal/nesa/parents/parent-guide/transitioning-to-school)
- [re-imagine.com.au/practitioner/transition-to-school/](http://re-imagine.com.au/practitioner/transition-to-school/)





## Some simple activities that you can do to help your child get ready for school are listed below:

- Read to your child every day and use books as a pleasurable shared activity.
- Make everyday things an exploration of language – ask the child questions, listen carefully to their answers, and encourage the child to ask why.
- Encourage the child's natural curiosity – do different things with them, encourage them to try different ways of doing things. For example, make a walk in the park a nature tour.
- Encourage the child to learn to dress and undress independently, and to use the toilet appropriately.
- Make sure the child has crayons and pencils and a supply of paper to draw and write on, and always praise their efforts.
- Encourage your child to mix with other children in different supervised activities so they learn to socialise with their peers, take turns and share their toys and books.
- *It is important to enrol your child at school as soon as possible in the year before school. Many schools like you to register interest in term one with enrolment completed by July. This ensures you can receive information about their school orientation and transition plans and participate in any programs.*

If you are concerned about whether your child is ready to start school, then it is important to get advice that can support you in making this decision.

You should talk to the preschool teacher, the kindergarten school teachers, and other health professionals. They can assist in assessing your child's development and readiness for school.

## Healthy Kids for School Check

Immunisation, Speech and Language, weight, height, dental

Contact Mudgee Community Health Centre Child  
PH: 6371 9881

## Early childhood programs can promote the following skills to support children's SCHOOL READINESS.

### **SOCIAL SKILLS to support children to:**

- positively approach other children and make friends • participate in play • express emotions and deal with conflict appropriately • show interest in others and form friendships • express their needs and wants appropriately • separate from parents or primary carers • take turns in games and activities • share toys and equipment • follow some directions and understand some rules • participate in groups and • cope with transitions between routines and experiences.

### **COGNITIVE SKILLS to support children to:**

- show natural curiosity and interest in learning new things • have confidence in learning and • be interested in solving problems and be creative.

### **LANGUAGE SKILLS to support children to:**

- use language to ask questions and communicate their thoughts and ideas • listen to others and • enjoy books and being read to.

### **INDEPENDENCE AND LIFE SKILLS to support children to:**

- cope with a small amount of supervision in a variety of situations • toilet and dress themselves independently • unpack their lunch box and use a drink bottle and • deal with a structured environment.

### **PHYSICAL SKILLS to support children to:**

- use pencils, crayons, textas and scissors • balance, run, jump and • use equipment such as balls and climbing apparatus.



ABN 25 686 096 090

These pamphlets are an initiative of  
Mudgee Region Child and Family Network  
Pamphlet 2/4: Version 3, May 2021

E: [enquiries@mudgeepreschool.com.au](mailto:enquiries@mudgeepreschool.com.au)  
PH: 6372 1460

# TRANSITION TO SCHOOL IN THE MID-WESTERN REGION INFORMATION PAMPHLETS FOR PARENTS AND CARERS

1. Early Childhood Education and Care
2. School Readiness
3. **Schools / Frequently Asked Questions**
4. Support for children with Additional Needs

## LOCAL SCHOOLS

It is important to enrol your child as soon as possible in the year before school. Many schools like you to register interest in term one with enrolment completed by July. This ensures you can receive information about their school orientation and transition plans.

### MUDGEES

Cudgegong Valley Public School  
PH: 6372 3466  
Email: [cudgegongv-p.school@det.nsw.edu.au](mailto:cudgegongv-p.school@det.nsw.edu.au)

Mudgee Public School  
PH: 6372 2036  
Email: [mudgee-p.school@det.nsw.edu.au](mailto:mudgee-p.school@det.nsw.edu.au)

St Matthews Catholic School  
PH: 6372 1742  
Email: [stmattsmudgee@bth.catholic.edu.au](mailto:stmattsmudgee@bth.catholic.edu.au)

### GULGONG

Gulgong Public School  
PH: 6374 1622.  
Email: [gulgong-p.school@det.nsw.edu.au](mailto:gulgong-p.school@det.nsw.edu.au)

All Hallows Primary School  
PH 6374 1582  
Email: [allhallowsgulgong@bth.catholic.edu.au](mailto:allhallowsgulgong@bth.catholic.edu.au)

### RYLSTONE / KANDOS

Kandos Public School  
PH: 6379 4201  
Email: [kandos-p.school@det.nsw.edu.au](mailto:kandos-p.school@det.nsw.edu.au)

Rylstone Public School  
PH: 02 6379 1404  
Email: [rylstone-p.school@det.nsw.edu.au](mailto:rylstone-p.school@det.nsw.edu.au)

### SMALL SCHOOLS

Hargraves  
PH: 6373 8524  
Email: [hargraves-p.school@det.nsw.edu.au](mailto:hargraves-p.school@det.nsw.edu.au)

Goolma  
PH: 6374 0272  
Email: [goolma-p.school@det.nsw.edu.au](mailto:goolma-p.school@det.nsw.edu.au)

Lue  
PH: 6373 6407  
Email: [lue-p.school@det.nsw.edu.au](mailto:lue-p.school@det.nsw.edu.au)

Ilford  
PH: 6358 8507  
Email: [ilford-p.school@det.nsw.edu.au](mailto:ilford-p.school@det.nsw.edu.au)

### OUT OF SCHOOL HOURS CARE

Mudgee PS BigChildcare  
PH: 0487185396  
Email: [mudgee@bigchildcare.com](mailto:mudgee@bigchildcare.com)  
Info and enrolment: [bigchildcare.com](http://bigchildcare.com)

Cudgegong Valley PS BigChildcare  
PH: 0458335779  
Email: [mudgee@bigchildcare.com](mailto:mudgee@bigchildcare.com)  
Info and enrolment: [bigchildcare.com](http://bigchildcare.com)

Family Day Care  
PH: 63782730  
Email: [family.daycare@midwestern.nsw.gov.au](mailto:family.daycare@midwestern.nsw.gov.au)

Lifeskills Plus (for children with a disability)  
PH: 63726440  
Email: [reception@lifeskillsplus.com.au](mailto:reception@lifeskillsplus.com.au)



# FREQUENTLY ASKED QUESTIONS

## 1. At what age does my child have to start school in NSW?

The education system sets an age when your child should start school; this varies slightly between systems and states across Australia. In NSW your child can start Kindergarten at the beginning of the school year if they turn five on or before 31 July in that year. By law, all children must be enrolled in school by their sixth birthday.

## 2. What are the term dates?

For term dates and public holidays visit the NSW Department of Education Website: [nsw.gov.au/about-nsw/school-holidays](https://nsw.gov.au/about-nsw/school-holidays)

## 3. What are the School Zones in Mudgee?

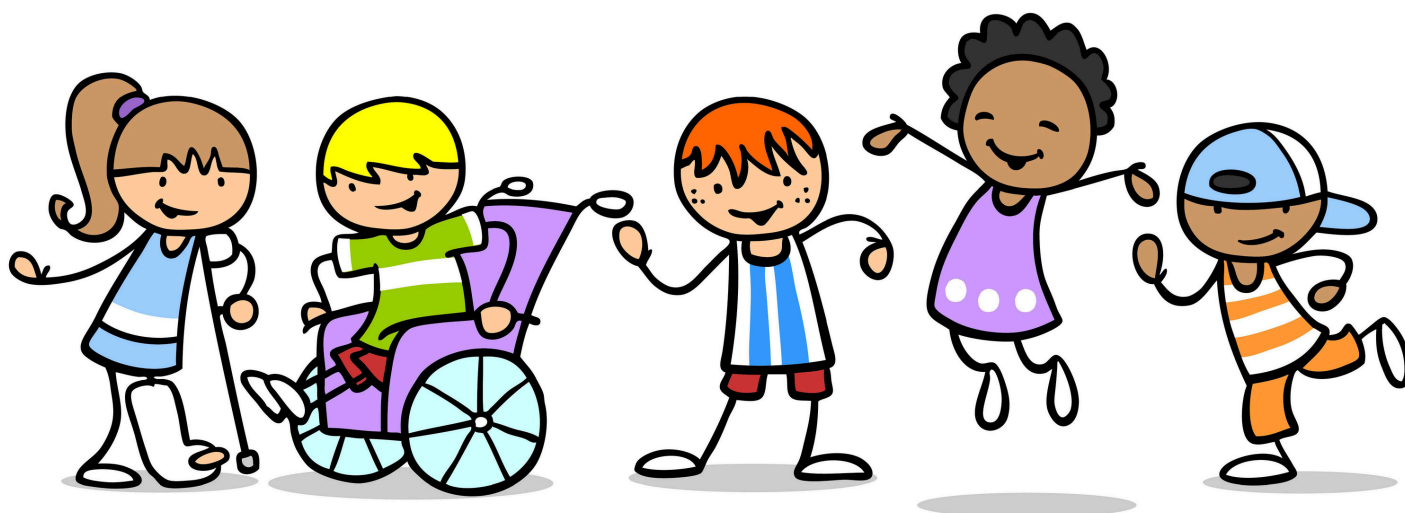
The designated public school for each local address can be found at <https://schoolfinder.education.nsw.gov.au/>. Contact the schools for further information about enrolment options.

## 4. What information do I have to provide to the school when enrolling my child?

- Birth Certificate.
- Australian Childhood Immunisation Register (your child's immunisation history). Parents can request copy of the History Statement by calling the ACIR on 1800 653 809, requesting a statement by emailing [acir@medicareaustralia.gov.au](mailto:acir@medicareaustralia.gov.au) or visiting Medicare Online Services at [www.medicareaustralia.gov.au/online](https://www.medicareaustralia.gov.au/online) or a local Medicare office.
- Proof of residential address.
- Copies of any relevant family law or other court orders.
- Information regarding medical details and health conditions your child may have.

## 5. What does the school need to know, or have, to be ready for my child?

- Information regarding disabilities or other additional needs in areas such as communication, behaviour, cognitive development or mental health.
- Information regarding special requirements related to physical access, dietary or medical conditions.
- Transition to School Statement from early childhood education and care service, if available.
- Is English your second Language? What is your cultural background?
- Is your child of Aboriginal or Torres Strait Islander descent?
- Is your child in Out of Home Care?





## 6. What do I need to organise before my child starts school?

- Purchase school uniform – each school has a uniform shop supplying new or second hand uniforms. St Vincents de Paul sells second hand uniforms.
- What about books bags and stationery? Resource lists will be available from your school.
- Take your child for a health check-up before school starts – available at the local Community Health.
  - ✓ Mudgee Child & Community Health Clinic: 6371 9881
  - ✓ Rylstone Health One: 6357 6150
  - ✓ Gulgong Multi-Purpose Service: 6374 3400

## 7. What transport options are there?

Bus passes should be applied for online at: [www.transport.nsw.gov.au/customers/ssts](http://www.transport.nsw.gov.au/customers/ssts)

The information below provides an indication of bus routes and the organisation that provides the service. If you would like additional information, please contact the service directly.

### A Booth - 6372 2056

Route: Cudgegong (Windamere Dam via Burrundulla Rd) and Botobolar  
Email: Msd02850@gmail.com

### B Ogdens Coaches - 63722489

Gulgong School Routes: Goolma; Laheys Creek; Tucklands; Blue Springs; Yarrawonga; Gulgong

### C Ogdens Coaches - 6372 2489

Mudgee Schools Routes: Gulgong; Lue; St Fillans; Hargraves; Piambong; Queens Pinch; Pyramul (Windeyer); Yarrabin; South Mudgee; Totness; Frog Rock; Wilbertree; Wollar; Ulan; Turill; Wyaldra; Goolma  
[www.ogdenscoaches.com.au](http://www.ogdenscoaches.com.au)  
Email: mudgee@ogdenscoaches.com.au

### D Terry Campbell - 6373 8542

Route: Hargraves Public School

### E Tove Hill - 0428678830 (covers Lue, Kandos,

Rylstone, Ilford and Capertee)  
Routes: Lue Public School; Kandos/Rylstone Schools; Ilford Public School; Clandulla; Charbon; Glenn Alice.  
Email: Jelrington@bigpond.com



Bus providers encourage parents to make their children familiar with catching the bus prior to starting school. Where possible, driving along your child's intended bus route and reinforcing bus safety may help smooth their transition.

### Travel for children with a disability or medical condition:

[www.transport.nsw.gov.au/customers/ssts](http://www.transport.nsw.gov.au/customers/ssts)

This website also contains alternate information for students unable to travel via bus due to a disability or medical condition. If your child has a disability and you need assistance, please contact your School Principal to discuss the eligibility criteria and application process. Children must already be enrolled in school before they are eligible to apply for the Assisted School Travel Program or the Private Vehicle Conveyance Scheme.



ABN 25 686 096 090

These pamphlets are an initiative of  
Mudgee Region Child and Family Network  
Pamphlet 3/4: Version 4, April 2023  
E: [enquiries@mudgeepreschool.com.au](mailto:enquiries@mudgeepreschool.com.au)  
PH: 6372 1460

## TRANSITION TO SCHOOL IN THE MID-WESTERN REGION INFORMATION PAMPHLETS FOR PARENTS AND CARERS

1. Early Childhood Education and Care
3. Schools / Frequently Asked Questions

2. School Readiness
4. [Support for children with Additional Needs](#)

# Support for children with **ADDITIONAL NEEDS**

## 1. What are additional learning needs?

Children with additional learning needs refers to children with learning difficulties, a behaviour disorder and/or a disability. These children have diverse abilities and learning needs. Parents or caregivers are often the first to notice that their child's development is delayed.

The term "disability" includes children with an intellectual disability, physical disability, vision impairment, hearing impairment, language and communication disorders, mental health conditions or autism.

## 2. My child has a additional learning need – what do I need to do?

If you have concerns about your child's development or progress, it is important to discuss your concerns as soon as possible with relevant professionals such as your family doctor, community early childhood nurse or your child's paediatrician. Assessments and follow-up support may be required and beneficial before the transition to school. Your child's early childhood teacher, the school principal, teacher or school counsellor may also be of assistance in this process.

## 3. What support will my child receive at an early childhood education and care service?

Early childhood services support the inclusion of children with additional needs in their mainstream settings. The early childhood service will work with you, the school and any other allied health professionals to develop a transition to school plan. It is important to talk to the early childhood education and care service to discuss what level of support they will be able to provide for your child.

## 4. What support will my child receive in primary school?

All schools have learning support funding to support children with Additional Needs inclusively in the mainstream setting. Some students with specific types of significant disabilities can apply to access integration funding to be further supported in the mainstream setting at their local school.

There are Learning Support Units at Mudgee Public School, Gulgong Primary School and Kandos Primary School which are a district resource which also cater for students with a range of moderate to severe disabilities.

It is important to know your child's zoned school and to contact the school early in the year prior to Kindergarten if your child has specific developmental or disability support requirements.

## 5. Inclusion in mainstream classes or Learning Support Unit?

Inclusion means your child should be supported to enjoy activities experienced by all children at school. All schools make adjustments for your child to access the curriculum according to their needs. Please contact the schools directly to discuss what support options your child may be eligible for and what setting may be appropriate or beneficial. It is not unreasonable to talk to your school about what adjustments can be made to include your child in activities enjoyed by their peers, prior to them starting school.

## 6. How will my child transition to school?

Contacting the school early allows the opportunity to plan for appropriate support, resources and transition to school program. Transition to school should be a team approach including the family, the child, the school, the early childhood education and care service and any involved allied health professionals.



## 7. Travel for children with a disability or medical condition:

[www.transport.nsw.gov.au/customers/ssts](http://www.transport.nsw.gov.au/customers/ssts)

This website contains information for students unable to travel via bus due to a disability or medical condition. If your child has a disability and you need assistance, please contact your School Principal to discuss the eligibility criteria and application process. Children must already be enrolled in school before they are eligible to apply for the *Assisted School Travel Program* or the *Private Vehicle Conveyance Scheme*.

## Family Support Services

There are a range of services providing support to families who have children with disabilities and additional learning needs. Contact them directly to find out what services are offered in your area and what they can do to help you and your child.

**Live Better / Early Links** helps families to find appropriate services in their local area  
PH: 6372 6797

**Family Support Services Mudgee Community Health** provides community early childhood nurse (Healthy Kids for School check), audiology, speech therapy, social work, counselling and referrals.  
PH: 6371 9801.

**Lifeskills Plus Inc.** is a not for profit organisation that provides a diverse range of services that support people with disabilities and their families in the Mid-Western Region.  
PH: 6372 3336

**Mudgee Disability Support Service** is a not for profit organisation that provides a diverse range of services that support people with disabilities and their families in the Mid-Western Region.  
PH: 63723848

**Barnardos** provides support for families with children aged 0-8 years via playgroups and parenting programs.  
PH: 6372 1622

**Benevolent Society** supports individuals and community across a range of areas including child and family and mental health.  
PH: 6370 8100

**NDIS Partner in the Community** Mission Australia delivers Early Childhood Early Intervention and NDIS Supports in Western and Far Western NSW for children ages 0-6 years. If your child is 0-6 years and has a disability or if there are concerns with their development they may be eligible to receive supports from the NDIS.  
PH: 1800 932 118

**NDIS** If your child is 7 and over and has a disability or if there are concerns with their development, they may be eligible to receive supports from the NDIS. [www.ndis.gov.au](http://www.ndis.gov.au)  
PH: 1800 800 110

**Samaritans** Permanency Support Program provides a secure and safe home for children who can't live at home  
PH: 6370 0990

## Links to further information:

### Raising Children

[www.raisingchildren.net.au/disability/school-play-work](http://www.raisingchildren.net.au/disability/school-play-work)

### National Disability Insurance Scheme (NDIS)

[www.ndis.gov.au](http://www.ndis.gov.au)

[www.education.nsw.gov.au/early-childhood-education/](http://www.education.nsw.gov.au/early-childhood-education/)

[www.re-imagine.com.au/practitioner/transition-to-school/](http://www.re-imagine.com.au/practitioner/transition-to-school/)

[www.schoolfinder.education.nsw.gov.au/](http://www.schoolfinder.education.nsw.gov.au/)



ABN 25 686 096 090

These pamphlets are an initiative of  
Mudgee Region Child and Family Network  
Pamphlet 4/4: Version 3, May 2021

E: [enquiries@mudgeepreschool.com.au](mailto:enquiries@mudgeepreschool.com.au)  
PH: 6372 1460

# CUDGEGONG VALLEY PUBLIC SCHOOL

## Kindergarten 2026 Orientation Program

### Kindergarten Enrolments are now open

Please contact the school office on 6372 3466 to register for an enrolment pack

#### Term 2

##### CVPS Expo

Wednesday 7th May - 5:30pm to 6:30pm

A showcase of the wonderful opportunities available to students at our school

##### School Tours and Open Classrooms

Register for a tour via the QR code



Tours held at 10am on:  
20th & 23rd May  
3rd & 6th June

Complete your enrolment online by  
**Friday, 27th June 2025**



#### Term 3

##### Kindergarten 2026

##### Information Evening for Parents

Wednesday 6th August - 5:30pm to 6:15pm

An evening about starting Kindergarten  
Children welcome

Later in Term 3, children enrolling in Kindergarten for 2026 who are not yet familiar with our school environment will be invited to attend short transition sessions. More information in regard to these sessions will be available closer to the date.

#### Term 4

##### Let's Connect

##### Transition to school program

5 x 1 hour sessions over 5 weeks

**Week 1:** 21st or 24th October

**Week 2:** 28th or 31st October

**Week 3:** 4th or 7th November

**Week 4:** 11th or 14th November

**Week 5:** 18th or 21st November

These sessions support  
children's readiness for school

**Meet your teacher and class afternoon**  
16th December

For more information, please contact

**School Office: 6372 3466**

Visit: <https://cudgegongv-p.schools.nsw.gov.au/>

